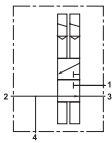


Symbol



Product feature

Basic features of safety valves

- . Inherently fail safe design
- . Dynamic self monitoring
- . Double crossflow channel design
- . Residual pressure-free system
- . Large exhaust capacity
- . Short response time

The Solution for

many delicate safety applications

- . The main principles to be kept in mind when thinking about safety applications are:
- . prevent people from getting hurt;
- . protect expensive machine parts and mechanical elements.

Safety valves - The ultimate choice when it comes to

- . fail safe operation
- . emergency stop
- . satisfying safety regulations
- . increasing safety
- . prevent injury
- . protect expensive equipment.
- . increase productivity

Whatever the safety requirements has the solution:

3/2 safety valves for many applications:

- . mechanical presses
- . pneumatic presses
- . amusement park facilities
- . emergency brake systems (or robots)
- . process control
- . special machines

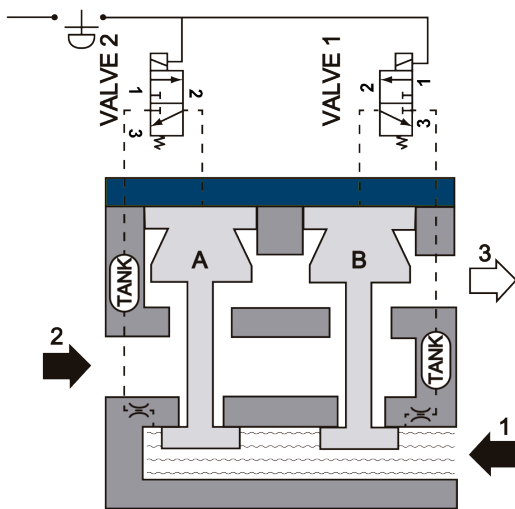
General Description.

VSS1, VSS2, VSS3 double valve are composed of two sections. 1) The base containing the 1 and 2 port which mounts to the machine. 2) The main valve housing contains the main section/poppet assemblies. 3) the solenoid pilot operators. 4) If any parts of the valve break, the air from 1 and 2 port will be exhausted by 3 port, the valve will be stop.

Functional Operation.

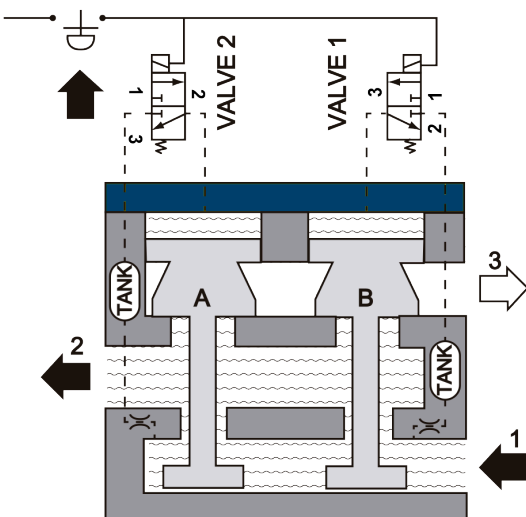
1. Normal Operation

At rest valve is normally closed. Inlet air, 1 is allowed to fill internal volume chambers via a set of control orifices. 2 port connected to 3 port exhaust.



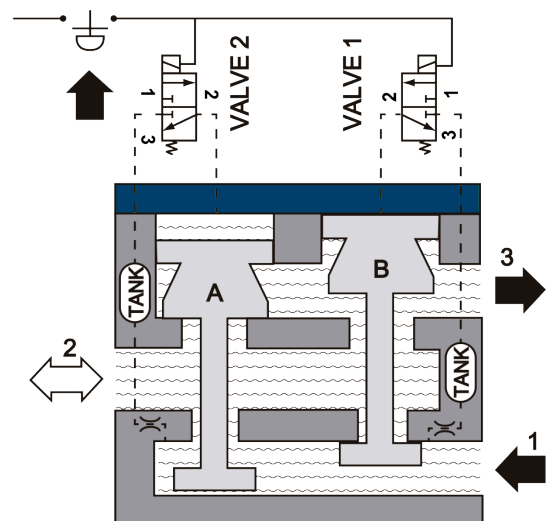
2. Energized Operation

Both solenoids are energized. Pilot circuit open allowing volume chambers to actuate main poppets, 1 connected to 2 port.

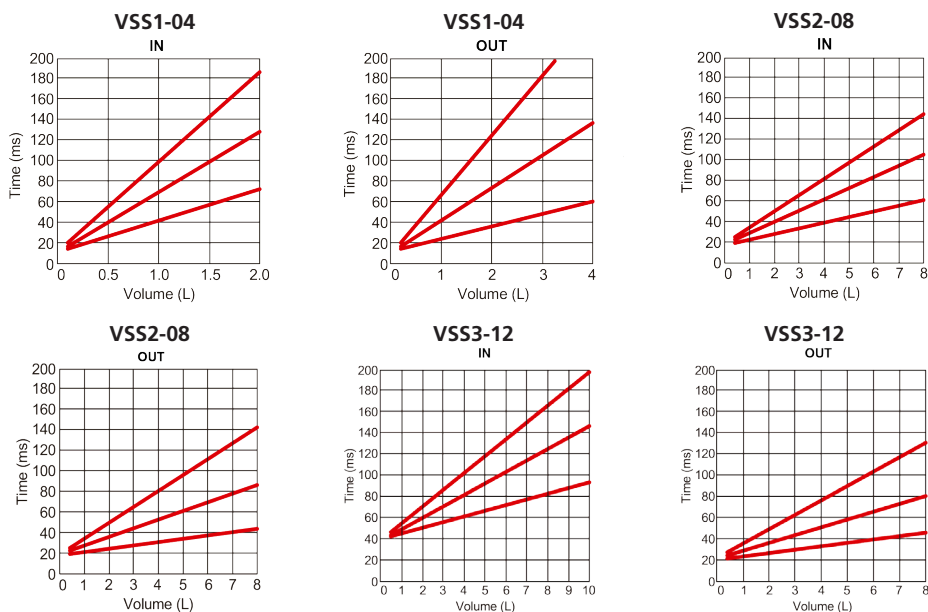


3. Malfunction Operation

Regardless of cause; lack of pressure, electrical failure or internal component breakage. without proper movement of the main poppet, the air volume will through low pressure path and exhaust from 3 port.



Pressure and feature of flow



Specification

Valve	VSS1-04	VSS2-08	VSS3-12
Fluid	Air(to be filtered by 40 µm filter element)		
Acting	Internal pilot		
Port size	1/2"	1"	1.1/2"
Valve type	3/2 way		
Lubrication	Not required		
Operation pressure	1.5~8bar(21~114psi)		
Proff Pressure	15bar(215psi)		
Temperature °C	-20~70°C		
Orifice size (In) 1 to 2(mm²)	78.5	410.0	438.0
Orifice size (Out) 2 to 3 (mm²)	452.0	747.0	1930.0
Material of body	Aluminum alloy		

Coil specification

Item	Specification
Standard voltage	AC220V, AC110V, DC24V
Scope of voltage	AC: $\pm 15\%$ DC: $\pm 10\%$
Power consumption	AC11.1VA DC:6.1W
Protection	IP65
Temperature classification	B Class
Electrical entry	Terminal

Ordering code

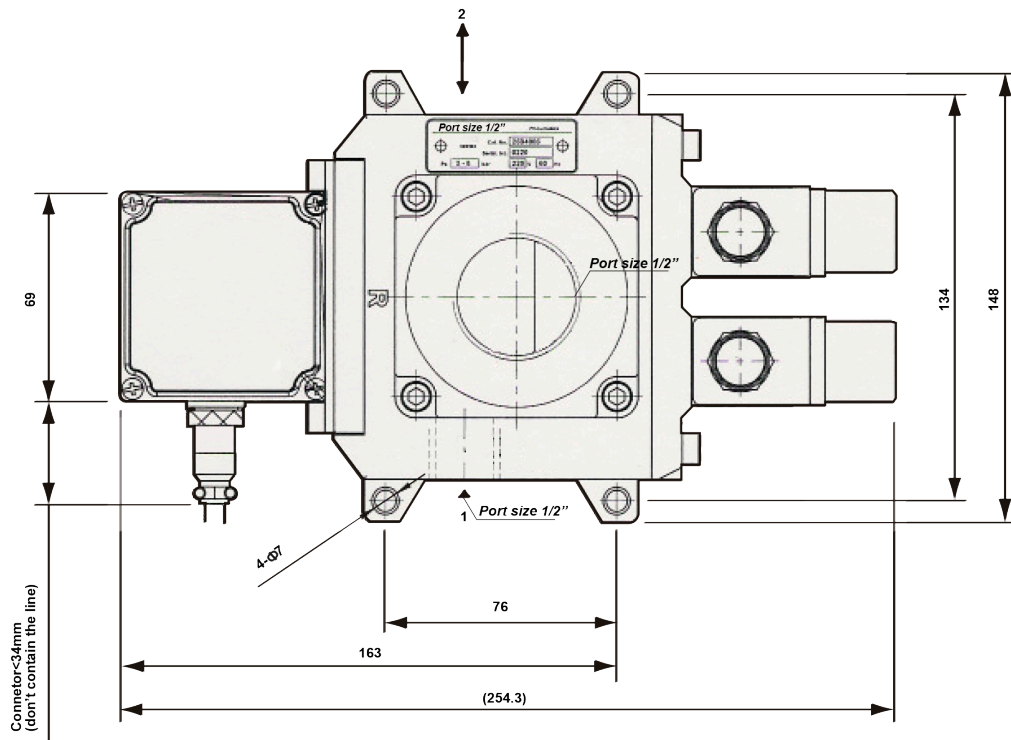
VSS1 - **04** - **VC**

① ② ③

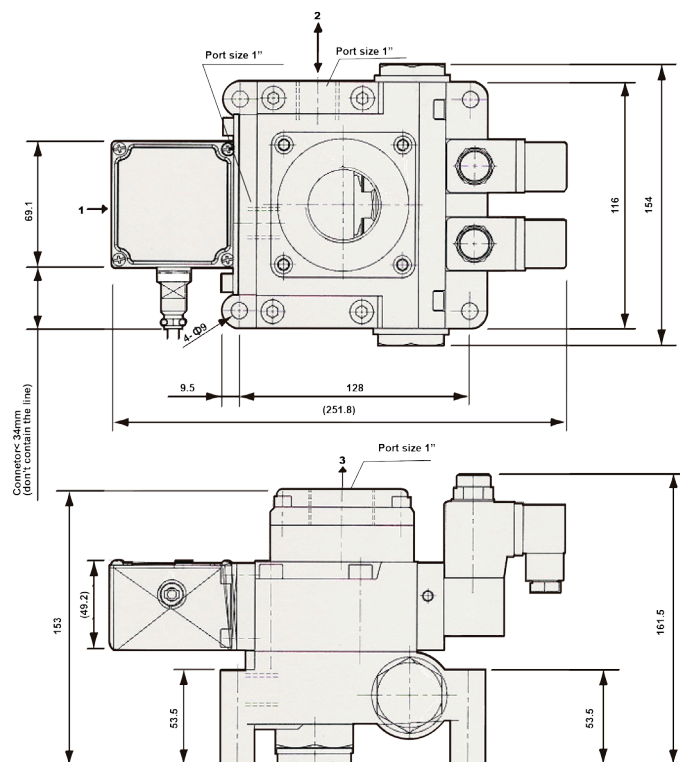
① Model	② Port Size	③ Voltage
VSS: VSS unit	04: 1/2"	VC: 24VCC
VSS2: VSS unit	08: 1"	CA: 100VCA
VSS3: VSS unit	12: 1.1/2"	DA: 220VCA

Dimensions

VSS1



VSS2



VSS3

